

# Modern Slavery Statement 2023

Wesley Mission Queensland



Reporting Period: 1 July 2022 to 30 June 2023

---

## Table of Contents

Introduction .....	3
About Us .....	3
Reporting Criterion 1: Entity .....	3
Reporting Criterion 2: Structure, operations and supply chains .....	3
Structure .....	3
Supply Chains.....	6
Reporting Criterion 3: Risks .....	7
Reporting Criterion 4: Actions and Control .....	8
Reporting Criterion 5: Effectiveness .....	8
Reporting Criterion 6: Consultation.....	8

## Introduction

As a not-for-profit organisation founded in the roots of the Uniting Church, Wesley Mission Queensland (WMQ) recognises the importance of combating modern slavery, a crime that affects communities and individuals across the globe. Our Mission, Vision and Values guide us to act in a way that upholds the intrinsic worth and dignity of every person at every stage of life and in every circumstance, regardless of race, age, gender, beliefs or economic status.

We oppose exploitative practices that violate an individual's dignity and human rights in all forms. In accordance with the Federal Government's Modern Slavery Act 2018, this statement outlines the steps that we have taken during the reporting period from 1 July 2022 to 30 June 2023 to assess and address the risks of modern slavery in any part of our business, operations or supply chains.

## About us

Since 1907, Wesley Mission Queensland (WMQ) has been helping people across Queensland build stronger and more inclusive communities. As a not-for-profit we provide community support; mental health services; aged, disability and palliative care; and retirement living through our 13 residential aged care homes, three retirement villages, 14 specialist disability accommodation facilities and two hospices. We also deliver statewide community support and Auslan interpreting services to the Deaf community nationally.

WMQ operates as a mission activity of the Albert Street Uniting Church. We work collaboratively with other Uniting Church congregations, community organisations and government bodies to provide accessible and flexible services to older people, those living with a disability or mental illness, and vulnerable children and families.

**Our purpose:** To participate in the mission of God towards reconciliation, transformation, justice and hope for all people.

**Our vision:** A compassionate, just and inclusive society for all.

**Our mission:** We walk alongside people in need, offering care and compassion and promoting choice, independence and community wellbeing.

**Our values:** Integrity, respect, empowerment, hope, justice, compassion, innovation

## Reporting Criterion 1: Entity

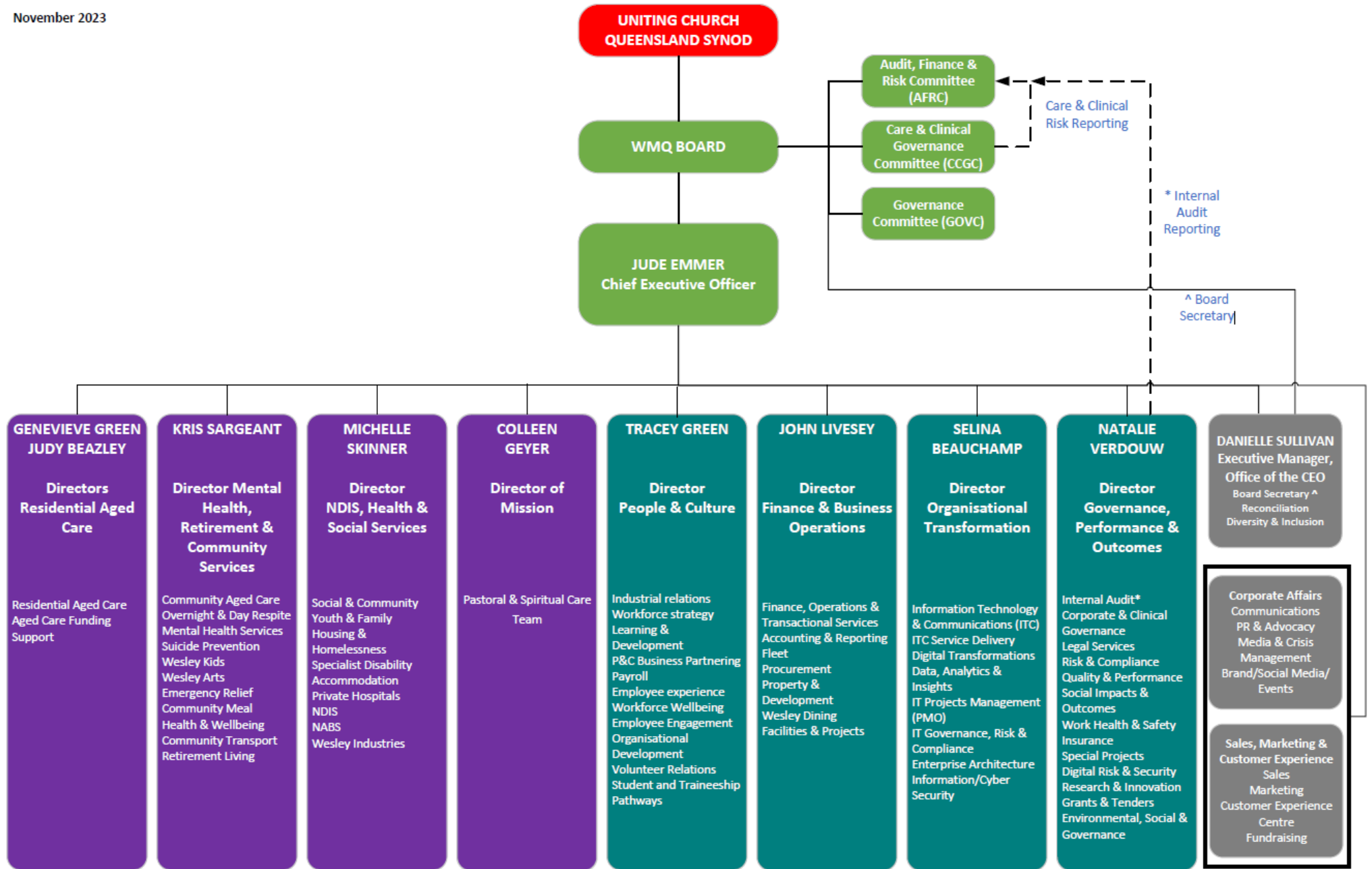
### This Statement covers:

Wesley Mission Queensland ABN: 28 746 881 862

## Reporting Criterion 2: Structure, operations and supply chains

### Structure

WMQ's organisational structure at the end of the reporting period is outlined below.



## Operations

WMQ is a not-for-profit organisation with operations spanning a variety of services designed to support our mission - *to walk alongside people in need offering care and compassion and promoting choice, independence and community wellbeing.*

Our operations include:

- Retirement Living
- Home and Community Care
- Residential Aged Care
- Disability Services
- Health and Wellbeing Services
- Youth and Family Services
- Mental Health Services
- Food, Housing and Emergency Support
- Respite, Palliative and End-of-Life care for children and adults
- Supported Youth Housing
- National Auslan Interpreter Booking Service
- Albert St Uniting Church including Art from the Margins

Geographically WMQ primarily operates in Queensland communities north to Bundaberg, south to the Gold Coast and west to Laidley, with additional services across Australia through the National Auslan Booking Interpreter Service (NABS)

- **89** service locations across the state
- **More than 80** community service programs to support children, youth and families in need
- **2** palliative care services, Hummingbird House children's hospice and Hopewell Hospice
- **14** specialist disability accommodation homes
- **330** interpreters across the country supporting the Deaf community
- **13** residential aged care homes supporting **1,000** residents
- **1300** volunteers who donated **271,753** hours in time
- **2** headspace youth mental health centres and **1** headspace satellite service
- **3** retirement living communities
- **3000** employees



## Supply Chains

WMQ obtains goods and services across five main procurement categories each with various subcategories:



Examples of the goods and services obtained by WMQ:

- ❖ Clinical Care – physiotherapy, agency staff, occupational therapy, psychological services/counselling
- ❖ Clinical Consumables – wound care products, gloves, gowns, masks, hand and body hygiene products
- ❖ Clinical Equipment – beds, hoists, mattresses, wheelchairs, walking assistance
- ❖ Fleet Services – vehicle purchases/leases, vehicle repair and maintenance, fuel and tolls
- ❖ Human Resources – training, corporate temporary labour, recruitment, staff support
- ❖ Marketing and Communication – print and promotional material, advertising services, signage
- ❖ Office Suppliers – stationery, office furniture, postage and courier
- ❖ Travel & Events – venue hire, accommodation, air travel, car hire, cab/taxi expenses
- ❖ Catering – grocery, meat, dairy, bakery, beverages, equipment, catering services
- ❖ Laundry – equipment, consumables, laundry services, linen
- ❖ IT Hardware – mobile phones, laptop computers, desktop computer, printers, peripherals
- ❖ IT Software – enterprise software solutions, operating solutions, Adobe, Microsoft
- ❖ IT Telco & Comms – network and cabling equipment, PABX systems, LAN/WAN services
- ❖ Building Maintenance – plumbing, electrical, HVAC, fire services, waste, pest control
- ❖ Equipment – furniture and fittings, tools, whitegoods and appliances
- ❖ Land & Development – building major and minor works, building supplies, ground works, consultants
- ❖ Outdoor Maintenance – landscapers and supplies, gardeners, lawn maintenance
- ❖ Security – alarm systems, onsite security, security monitoring
- ❖ Utilities – water, electricity, gas

For the reporting period, Wesley Mission Queensland had 1056 suppliers with the top 10 representing 32 per cent of our overall category spend. Our intent for this reporting period was to focus on suppliers providing food, textiles and clothing.

## Reporting Criterion 3: Risks

In this reporting period, WMQ continued to work in fellowship with other Uniting Church entities and other health and aged care providers to attain knowledge and insight on our potential supplier risks across our highest spend suppliers and supply categories. WMQ determined potential risks for modern slavery by using risk indicators provided by expert organisations such as the Global Slavery Index (GSI) and SD Strategies and identified the following operational and supply chain categories as giving rise to medium to high-risk exposure to modern slavery infractions.

### Supply Chain

CATEGORIES	OVERVIEW	MODERN SLAVERY RISKS IDENTIFIED
Building & Construction	<ul style="list-style-type: none"> <li>Locally based contracted large suppliers, subject to local regional laws</li> <li>Locally based non-contracted smaller suppliers, subject to local regional laws</li> <li>Labour employed through sub-contractors or agents</li> </ul>	<ul style="list-style-type: none"> <li>Complex multi-tiered supply chains, which may occur in high-risk countries</li> <li>Raw materials obtained through exploited/forced labour forces</li> <li>Opaque sub-contracting arrangements and frequent use of labour hire companies</li> <li>Potentially hazardous working conditions</li> <li>Lack of knowledge of suppliers' own modern slavery risk exposure</li> </ul>
IT/Telecommunications	<ul style="list-style-type: none"> <li>Multinational contracted, and non-contracted suppliers located in countries with modern slavery, human rights and/or labour laws</li> </ul>	
Apparel and other textiles	<ul style="list-style-type: none"> <li>Non-contracted suppliers subject to local regional laws</li> </ul>	
Medical consumables	<ul style="list-style-type: none"> <li>Contracted and non-contracted suppliers located in countries with modern slavery, human rights and/or labour laws</li> </ul>	
Medical equipment	<ul style="list-style-type: none"> <li>Non-contracted suppliers subject to local regional laws</li> </ul>	
Catering & food	<ul style="list-style-type: none"> <li>Contracted and non-contracted suppliers located in countries with modern slavery, human rights and/or labour laws</li> </ul>	

### Wesley Mission Queensland Operations

CATEGORIES	OVERVIEW	MODERN SLAVERY RISKS IDENTIFIED
Recruitment processes	<ul style="list-style-type: none"> <li>Direct employed staff covered by Australian labour laws</li> </ul>	<ul style="list-style-type: none"> <li>Potential for deceptive recruitment processes and false information being provided</li> </ul>
Agency labour contractors	<ul style="list-style-type: none"> <li>Locally based Tier 1 suppliers, subject to Australian labour laws</li> </ul>	

## Reporting Criterion 4: Actions and Control

Whilst risks remain high in some areas, WMQ's objective for the reporting period was to strengthen our understanding of potential modern slavery risks within our food, textiles and clothing supply chains. At the same time, WMQ required all of our key suppliers and partners to commit to compliance with the Act. During the reporting year WMQ undertook the following:

**Modern slavery action plan:** WMQ's action plan was reviewed and updated to meet the year's intended goals. Actions were assigned to the appropriate internal personnel to address key area of review.

**Working with suppliers:** We probed deeper into the suppliers that provided food and textile products to understand what down chain mitigation/investigatory policies and procedures they have in place. Additionally, we engaged with alternative suppliers to further our knowledge on what other options may be available to WMQ should significant concerns around down chain Modern Slavery issues be found.

**Due diligence questions:** The standard question set continued to be included and used to evaluate tenderers for all market exercises run by, and on behalf of, WMQ to help identify and manage modern slavery risks.

**Terms and Conditions of Agreement:** Our Procurement department continued to utilise the updated contractual terms and conditions for all new or renewal of agreements between WMQ and vendors/suppliers. These terms include provisions specific to address Modern Slavery Act compliance, expectations to address risks within the vendor's/supplier's supply chains and processes for reporting non-compliance with the Act to WMQ.

**Statement of Business Ethics:** WMQ require our contracted and non-contracted suppliers to comply with our Statement of Business Ethics. This statement is incorporated in all contractual documentation and outlines our expectations and commitment to engaging with suppliers who share our values and goals.

**Working with other Uniting Church entities:** WMQ's ongoing engagement with other Uniting Church entities remains to help guide and support collation of common supplier's risk assessments.

**Review of Supplier Modern Slavery Statement:** WMQ reviewed key supplier's modern slavery statements available through the reporting portal to assist in informing our risk exposure.

## Reporting Criterion 5: Effectiveness

In reviewing the effectiveness of WMQ efforts there is clear demonstration that the suppliers we engage with, both existing and new, are becoming increasingly aware of the risks that are contained within their supply chain and are, in many cases, able to provide detailed processes and answers on how they are addressing these risks. Additionally, our use of specific tender questions sets, contractual terms, statement of business ethics and inclusion of Modern Slavery discussion points within meeting agendas reinforces our commitment to the Act and its purpose.

## Reporting Criterion 6: Consultation

We have consulted with numerous areas of our business, including our Executive Leadership Team and senior representatives from our Property & Development, Facilities & Maintenance, Procurement, Business Services Group, Finance and Governance, Performance and Outcomes teams to support our obligations under the Act.

This statement is made in accordance with the Australian Modern Slavery Act 2018 and was approved by the Wesley Mission Queensland Board on 25<sup>th</sup> October 2023.



Elaine Rae  
Wesley Mission Queensland Board Chairperson  
22 November 2023