

Modern Slavery Act Statement

Reporting Period
1 July 2023 – 30 June 2024

Northeast Health Wangaratta



35/47 Green Street, Wangaratta, Victoria

Modern Slavery Act Statement

This Modern Slavery Statement is made pursuant to the Commonwealth *Modern Slavery Act 2018* (the Act) by Northeast Health Wangaratta and relates to the financial year 1 July 2023 to 30 June 2024.

Mandatory Criteria One and Two

Identify the reporting entity and describe its structure, operations and supply chains:

Northeast Health Wangaratta (NHW) of 35/47 Green Street, Wangaratta, ABN 13 157 273 279, is a Schedule 1 Public Health Service incorporated pursuant to the provisions of the Health Services Act 1988 (Vic).

Northeast Health Wangaratta is the specialist referral hospital for the Central Hume area of North East Victoria. Our organisation meets the healthcare needs of 28,000+ people in the Rural City of Wangaratta, our primary catchment, with an additional 62,000+ people in our secondary catchment – a total of approximately 90,000 people. Acute inpatient and community services are located in Green Street, Wangaratta, and our Residential Aged Care Facility, Illoura, is located off site in College Street, Wangaratta. Clinical Services provided on the Green Street campus include Accident & Emergency, Critical & Intensive Care, General Surgery, Orthopaedics, Urology, Obstetrics, Gynaecology, Paediatrics, General Medicine, Oncology, Renal Dialysis, Rehabilitation, Dental, Medical Imaging, Community Nursing, Allied Health and Outpatient services. Our staff also provide a range of preventative health programs. The 72 bed facility in College Street provides 66 high care residential aged care and 6 transition care beds.

Patient Activity 2023-24

Emergency Department Attendance – 30,843

Surgical Procedures – 7,310

Births – 667

Illoura Residential Aged Care – 94.62% Occupancy

Medical Imaging Presentations – 77,252

Community Health – 5,337 hours of care

Community Nursing – 16,914 hours of care

These services are complimented by an ICU, Medical Ward, Surgical Ward, Maternity Ward, Paediatric Ward, Sub-Acute Ward, Residential Aged Care, and 4 operating theatres.

NHW provides services in emergency, maternity, women's health, medical imaging, pathology, rehabilitation, community services, residential aged care, community dental, palliative care, cancer services and renal dialysis to the people of the Hume region.

Our Annual General Report can be access via <https://www.northeasthealth.org.au/>

There is one main campus at NHW, with our Aged Care Facility located off-site in College Street Wangaratta. NHW and the Victorian Government are committed to delivering high quality health-care to the community of Wangaratta and surrounds.

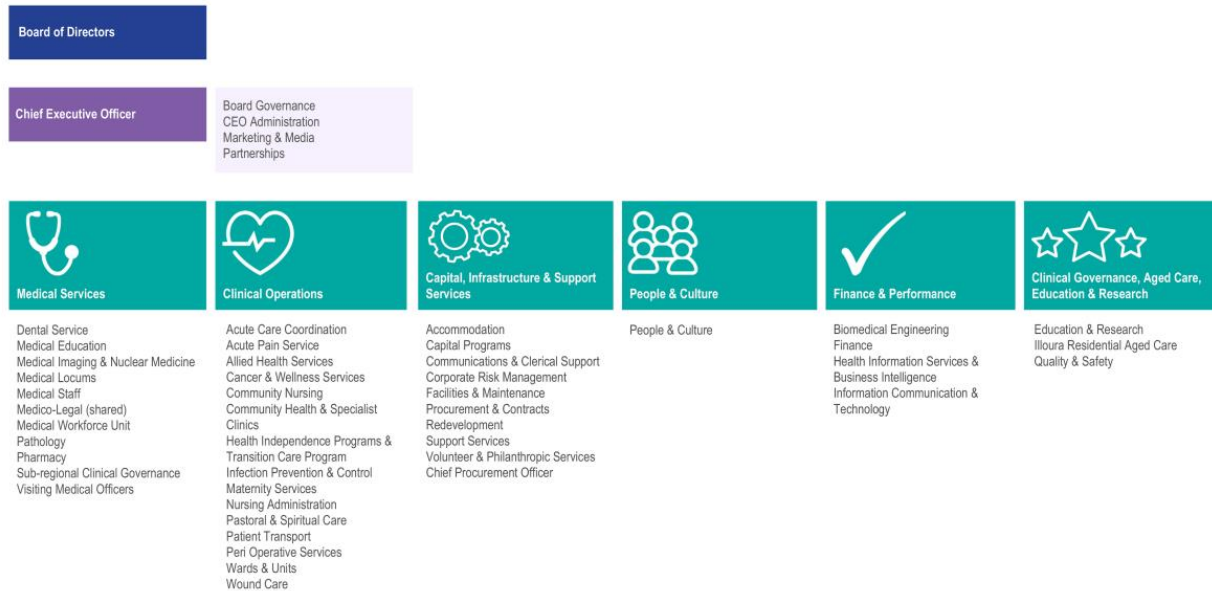
Northeast Health Wangaratta's Organisational Chart

Northeast Health Wangaratta

ORGANISATIONAL STRUCTURE



Northeast Health Wangaratta
Every person. Every Time



Supply Chain

Medical Services	Nursing and Community Care	Corporate	People and Culture	Finance & Performance	Education/Aged Care
Dental Service Medical Education Medical Staff Clinical Directors Hospital Medical Officers Interns Junior Medical Officers Medical Imaging & Nuclear Medicine Medical Locums Medico-Legal (shared) Medical Workforce Unit Administration Heads of Department Pathology Pharmacy Sub-regional Clinical Governance Visiting Medical Officers	Acute Care Coordination Acute Pain Service Allied Health Services Acute Allied Health Allied Health Assistants Community Rehabilitation Diabetes Education Dietetics Exercise Physiology Inpatient Rehabilitation AH Occupational Therapy Physiotherapy Social Work Speech Pathology Spiritual Care Stomal Therapy Cancer & Wellness Services Breast & Gynaecological Care Service Oncology Unit Specialist Cancer Clinics Community Nursing Community Palliative Care District Nursing Services (DNS) GEM in the Home (GITH) Home Care Packages Hospital in the Home (HITH) Palliative Care Community Health & Specialist Clinics Clinics Community Health Community Service Intake Health Promotion Specialist Outpatient Clinics	Health Independence Programs & TCP Complex Care Service Post Acute Care (PAC) Residential In-Reach Service (RIR) Subacute Ambulatory Care Service Transition Care Program (TCP) Infection Prevention & Control NHW Infection Control Regional Infection Control Staff Health Clinic Maternity Services Nursing Administration Pastoral & Spiritual Care Patient Transport Peri Operative Services Wards & Units Admission & Day Stay Unit Emergency Department Dialysis Unit Intensive Care Unit Medical Ward Casualty Ward Surgical Ward Thomas Hogan Rehabilitation Centre Wound Care	Accommodation Capital Programs Communications & Clerical Support Emergency Department Reception Private Patient Liaison Relieving Clerical Team Switchboard Corporate Risk Management Facilities & Maintenance Procurement & Contracts Redevelopment Support Services Environmental Services Food Services Security Services Supply Department Sub-regional Corporate Services Volunteer & Philanthropic Services	People & Culture Diversity & Inclusion ioc Aboriginal Health & Disability Support Human Resources OH&S - Injury Management Payroll Recruitment Staff Wellbeing Health Information Services & Business Intelligence Hume Rural Health Alliance Information Communication & Technology Sub-regional Health Information Services Telehealth Director of Finance Finance Department	Education & Research Health Sciences Library Research Governance Staff training Programs Student & Traineeship Programs Tertiary Education Liaison Illoura Residential Aged Care Quality & Safety Accreditation Programs Clinical Audit Consumer Experience & Engagement Freedom of Information Innovation & Improvement Medico Legal (shared) Policy & Guideline Administration Risk Management

NHW's supply chain includes (but is not limited to) the products and services used to deliver healthcare services including medical equipment and consumables, personal protective equipment and ICT equipment. NHW's supply chain also includes products and services provided by contractors including (but not limited to) consultants, support and maintenance services. NHW also supports other external Hospitals with service support and also clinical and non-clinical consumables.

NHW also utilises the contracts under the HealthShare Victoria (HSV) arrangement. HSV is a state-wide procurement organisation that partners with Victoria's public health services to procure best-value goods and services. HSV works in partnership with public health services to understand their requirements, facilitate large-scale collective tenders and manage common-use contracts on behalf of the state. NHW purchases the goods and services it needs from the suppliers who are party to HSV collective agreements. As such, it is recognised that HSV has a significant role in health service supply chains.

In 2023-24, HSV entered into 451 new agreements across 34 procurement categories worth \$1.4bil in value.

HSV contracts cover a broad range of services, equipment and supplies across a number of categories including ventilators, beds, mattresses, patient trolleys, treatment chairs, hypodermic needles and syringes, gloves, pharmaceutical products, IV fluids, agency labour, catering supplies, laundry and linen services and non-emergency patient transport. A full list of HSV's sourcing categories can be found at:

<https://www.healthsharevic.org.au/contracts-and-documents/contracts>.

Mandatory Criteria Three

Describe the risks of modern slavery practices in the operations and supply chains of the reporting entity and any entities the reporting entity owns or controls:

As a health service with a largely skilled and directly employed workforce, NHW considers the risk of modern slavery within its direct business operations to be relatively low. In line with a risk based approach, these risks will be further examined in subsequent reporting periods.

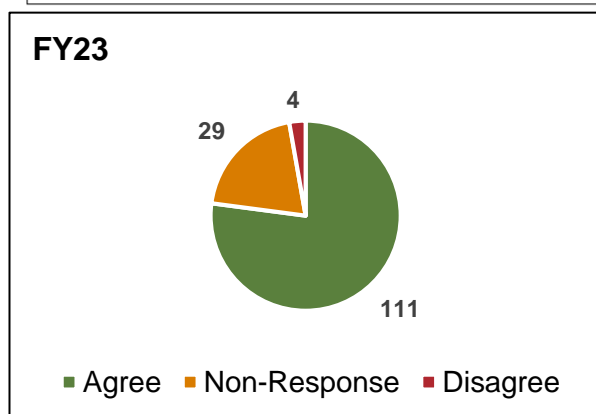
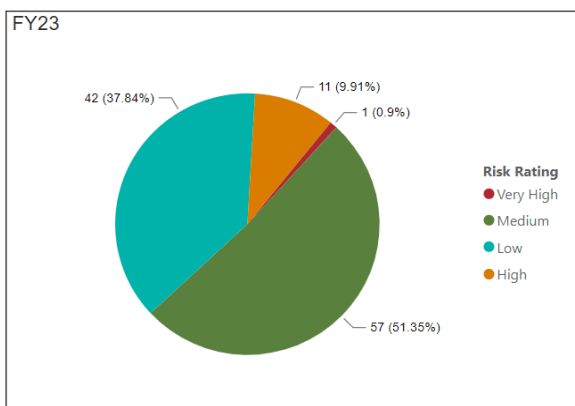
NHWs supply chain activities consist of the following procurement approaches to the market:

- Group sourcing activities:
 - HSV led cluster sourcing – collectively led by HSV on behalf of participating health services.
 - HSV led collective purchasing – collectively led by HSV on behalf of participating health services.
 - Health service led cluster sourcing – collaborative procurement by a group of health services, where the lead health service ensures modern slavery requirements.
- Direct sourcing activities where NHW directly engages with each supplier on its own.

HSV assisted NHW with the assessment of modern slavery risk in the supply chains of our Collective Purchasing Agreements. In 2023-24 HSV has provided a support focus to the health service in fostering collaboration between HSV, Health Services and Suppliers to prioritise risk mitigation actions. As a result, HSV rolled out 144 Questionnaires to HSV collective agreement suppliers that were accessed by NHW for the period FY2023-24. Of the 144 invited suppliers, 111 responded, whilst 4 declined to respond and 29 did not respond.

In many instances those that did not respond are required to do a Modern Slavery Statement and so there is an understanding of their progress around modern slavery.

Response Rate & Supplier Risk Ratings

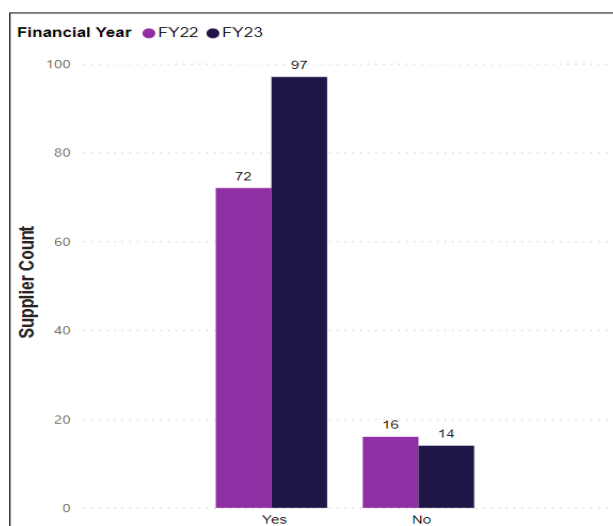


Supplier risk ratings and numbers

Risk Category	No. Suppliers	
	2022	2023
Very High	0	1
High	7	11
Medium	44	57
Low	37	42
Very Low	0	0

The HSV assessment identified 11 high risk and 1 very high-risk suppliers within NHW's supply chain. It should be noted that these results do not imply NHW has caused or contributed to modern slavery practices, but rather, NHW is linked to risks which exist offshore and in high-risk geographies

From the 111 respondents, 97 suppliers have policies in place covering modern slavery, with 14 suppliers not having a policy in place.



For direct sourcing activities, NHW acknowledges that there is a risk of modern slavery practices, especially upstream within tier two suppliers (manufacturers for our direct tier one suppliers) within the supply chain. We continue to progress in this space to better understand these risks; again, we use a risk-based approach which allows us to build on our focus and achievements from foundational levels.

Mandatory Criteria Four

Describe the actions taken by the reporting entity and any entities that the reporting entity owns or controls to assess and address these risks, including due diligence and remediation processes:

- Northeast Health Wangaratta prepared Procurement Framework in March 2023 and included is the role and responsibility of the Board of Directors to review and authorise the annual Modern Slavery Statement in compliance with the Act.
- A risk assessment template is in draft and planned for all market approach procurement activities.
- A modern slavery register has been created to populate and monitor, and will be maintained by the Procurement/Contracts team for the forward reporting cycles.
- A modern slavery clause has been incorporated into NHW's contract templates.
- Supplier Code of Conduct Commitment is included in all RFX documents.
- All NHW procurement staff have been provided with training via the ECHO training modules on the HSV website to educate and spread awareness to Health Service procurement staff, this is a mandatory training requirement for this staff cohort.
- In the 2023-24 period, the Chief Procurement Officer and Procurement Manager attended 3 out of 10 HSV MS Community of Learning sessions. Topics covered include: demonstrating progress, HSV supplier risk assessments, modern slavery statement trends, addressing modern slavery in Government supply chains and preparing and writing the modern slavery statement. The Chief Procurement Officer also attended one focussed 1:1 session with HSV on modern slavery requirements.

- HSV has engaged with the high and very high risk rated suppliers this year and requested they provide their modern slavery policy for review and feedback.
- HSV commenced supplier engagement sessions, with both HSV and non-HSV suppliers invited to sessions covering subject matter including 'Introduction to Modern Slavery risk', and 'Information sessions for suppliers on HSV collective agreements' with good supplier engagement and support.

Mandatory Criteria Five

Describe how the reporting entity assesses the effectiveness of actions being taken to assess and address modern slavery risks:

Of the 11 high and 1 very high risk rated suppliers HSV sought modern slavery policies from, HSV received nine modern slavery policies, which were reviewed and feedback for improvement was provided, where possible.

For FY2024-25, NHW will work with HSV to risk assess its suppliers, adopting a risk-based approach to identify suppliers with an annual spend of greater than \$150K to be risk assessed. This will provide NHW with modern slavery risk profiles for this cohort of suppliers and a greater understanding of the modern slavery risk in our supply chain. NHW will seek to engage with any high and very high-risk suppliers identified through this process, providing them with links to resources and online training sources. It is anticipated that as suppliers understand their risks, actions they take will reduce their risk and this will result in improved risk rating in future.

NHW will endeavour to engage with its staff and suppliers and support understanding of the Modern Slavery Policy through:

1. Modern Slavery Act training and awareness for Procurement and Leadership staff across the organisation in the 2024/2025 period
2. Engagement with our suppliers with training and resources specific to the introduction of the Modern Slavery Policy at NHW.

Continued commitment to work with our suppliers from NHW, along with continued support and education will lead to a reduction in the risk rating of suppliers against modern slavery through a continual improvement method.

NHW will mature in our understanding of the Modern Slavery Act and work actively with HSV to embed the learnings and risk management tools into our end-to-end procurement cycle.

Mandatory Criteria Six

Describe the process of consultation with any entities the reporting entity owns or controls:

Northeast Health Wangaratta does not own or control any other entities.

Mandatory Criteria Seven

Any other relevant information:

Northeast Health Wangaratta will continue to plan, review and implement the measures required to further enhance the HSV implementation guidance provided to assist Health Services. Further, NHW will also continue to work closely with HSV to continue to develop and enhance the practices and processes that underpin a successful Modern Slavery framework. This will include reporting on numbers of staff completing the Echo Modern Slavery training modules, details of risk ratings of suppliers directly engaged and measures taken by NHW to engage with them for the purposes of raising awareness.

Closing Statement

Northeast Health Wangaratta recognises the importance of implementing a robust Modern Slavery framework and is committed to continually improve our approach, assessment and awareness to eradicate Modern Slavery in our contract, procurement and supply chains. NHW also recognise there is more to do and remains highly committed to continually improving our approach by working closely with HSV and partnering with our stakeholders.

This statement will be approved by the Board of Northeast Health Wangaratta following the 26th February 2025



Board Chair: Alison Maclean

Northeast Health Wangaratta