

Modern Slavery Statement

Financial Year 2022



Table of Contents

Introduction

01 | Reporting Entity

02 | Structure, Operations and Supply Chain

03 | Modern Slavery Risks in the Operations and Supply Chains

04 | Actions Taken to Assess and Address Modern Slavery Risks

05 | Assessing the Effectiveness of Actions taken

06 | Other relevant Information



Introduction

Modern slavery is a serious exploitation of victims that undermines or deprives them of their freedom. The nature and extent of modern slavery means that there is a high risk that it may be present in an entity's operations and supply chain. The Australian Government introduced the Modern Slavery Act 2018 and Parkview Constructions is committed to identifying and eliminating Modern Slavery practices from our operations and supply chains.

The Modern Slavery Act 2018 has established Australia's national Modern Slavery Reporting requirements and Parkview Constructions welcomes this opportunity to submit its Modern Slavery Statement for the Financial Year 2022.

We recognise that addressing the risk of modern slavery practices in our operations and supply chains, will require a commitment to work alongside our supply chain and drive change, through transparency and an increased awareness of modern slavery risks.

We are committed to improving our efforts in identifying and eliminating modern slavery practices from our organisations operations and will seek to further develop and strengthen our approach over time. We look forward to being a part of the Governments efforts in ensuring that every individual enjoys the entitlement of freedom.







01

Reporting Entity

This modern slavery statement has been prepared on behalf of Parkview Constructions Pty Ltd (ABN 41 078 064 963) and is for the financial year 2022.

Parkview Constructions is a construction company committed to integrity, excellence, and innovation. Established in 1997, we have built long lasting relationships and delivered exceptional construction projects with all our clients and partners. We are committed to working alongside our Supply chain to help identify and eliminate the risks of modern slavery practices from our operations.



02

Structure, Operations and Supply Chain

Parkview Constructions is a privately owned Construction Company. Our head office is located at Level 7, 60 Union Street Pyrmont, and we have over 183 employees who are dedicated, highly experienced, and committed to delivering results.

Parkview's core business is best described as design and construction of multi-story residential, aged care and social housing, commercial and Industrial, retail and hospitality. We operate mostly in the Sydney region but have completed projects in the southern region of NSW including Wollongong and Shell Harbour.

Parkview's supply chain consists mostly of Consultants, Subcontractors and Suppliers who deliver services, Labour, materials, and equipment for our construction projects. Parkview Constructions engage mostly Australian based Subcontractors, who do source some of the materials used on our construction projects from overseas sources such as China and Europe.

Our key projects under construction during the FY 2022 were in NSW:

- Bondi Junction
- Granville
- Macquarie Park
- Woolooware Bay
- Marsden Park
- Melrose Park
- Parramatta
- Shell Cove
- Norwest

In FY2022 we procured over \$251m of goods & services from 883 direct Suppliers. Most of our direct suppliers are Australian companies but this may not represent the country of origin of materials or products supplied to our construction Projects.

COVID-19 was disruptive to our normal business operations for the most of FY 2022. It limited our ability to assess and address modern slavery risks in activities such as face-to-face engagement, training, and monitoring, including audit activities. Like most businesses we were focused on implementing comprehensive COVID-19 procedures and guidelines on our worksites including hygiene measures, social distancing, testing and contact tracing measures, as well as experiencing shutdowns for a period due to the high number of cases.

Parkview undertook the analysis of our Tier 1 Suppliers for FY2022. We identified:

1. Top 20 Subcontractor Spend \$86m which represented 34% of the total Spend for FY2022.
2. Top 5 Supplier Spend \$27m which represented 11% of the Total Spend for FY2022.
3. We have commenced the process of engagement with our Stakeholders identified above and are aiming to have tier 2 suppliers identified in FY2023.

03

Modern Slavery Risks in the Operations and Supply Chains

Due to Covid-19 impacts and the focus on implementing the Covid-19 Protocols and managing the disruptions to our business we have not completed a risk assessment of the modern slavery risks in our operations and supply chains.

The construction Industry including our operations and supply chain are exposed to the following modern slavery practices:



1. Labour

The industry relies on the use of labour to construct its projects locally and assemble materials or equipment overseas. Some of this labour is indirectly contracted through sub-contractors using labour hire companies. There is a risk that our industry is benefiting from the use of forced or unpaid labour.



2. Materials

Construction Projects are reliant on materials sourced and manufactured, locally and from the international supply chain. The risk lies in the ability to control or oversee the supply chain during the manufacturing and transporting process. This includes verifying the source of raw materials used during the manufacturing process. The lack of transparency during the production phase makes it more difficult to identify or address risks of modern slavery.







04

Actions Taken to Assess and Address Modern Slavery Risks

Due to Covid-19 impacts and the focus on implementing the Covid-19 Protocols and managing the disruptions to our business we did not undertake all the planned Actions for FY 2022.

Key Actions taken in FY 2022:

- Implemented a supplier code of conduct.
- Commenced the process of Engagement with key stakeholders regarding modern slavery risks and actions.
- Training of modern slavery management group and employees to raise awareness of modern slavery practices.



05

Assessing the Effectiveness of Actions taken

We have not yet completed implementing all our key Actions and have yet to establish the effectiveness of these actions. We Aim to assess our effectiveness of actions by:

- Engagement – With Suppliers and employees. Specific KPI's are to be set around responsiveness to modern slavery risks and reporting of modern slavery or human rights issues. For FY 2022 there were no reported issues.
- Collaboration – Third Party feedback. We have Consulted with a third party to assist in reviewing our modern slavery processes, and to help us identify Specific KPI's to best understand the effectiveness of our actions taken. We aim to implement this in FY2023.

06

Other relevant Information

Parkview Constructions action plan for FY 2023:

- Supply chain analysis, in particular identifying tier 2 suppliers within high-risk tier 1. Identifying Supply spend across major spend categories.
- Assessing overall modern slavery risk and collating the results in a risk matrix.
- Engage with our key stakeholders through the completion of a Supplier Questionnaire.
- Assessing the effectiveness of Actions taken, by engaging a third-Party consultant to assist.

This Statement for the financial year 2022 is made pursuant to Section 14 of the Modern Slavery Act 2018.

The Statement was approved by the Board of Directors of Parkview Constructions on 27th October 2022.



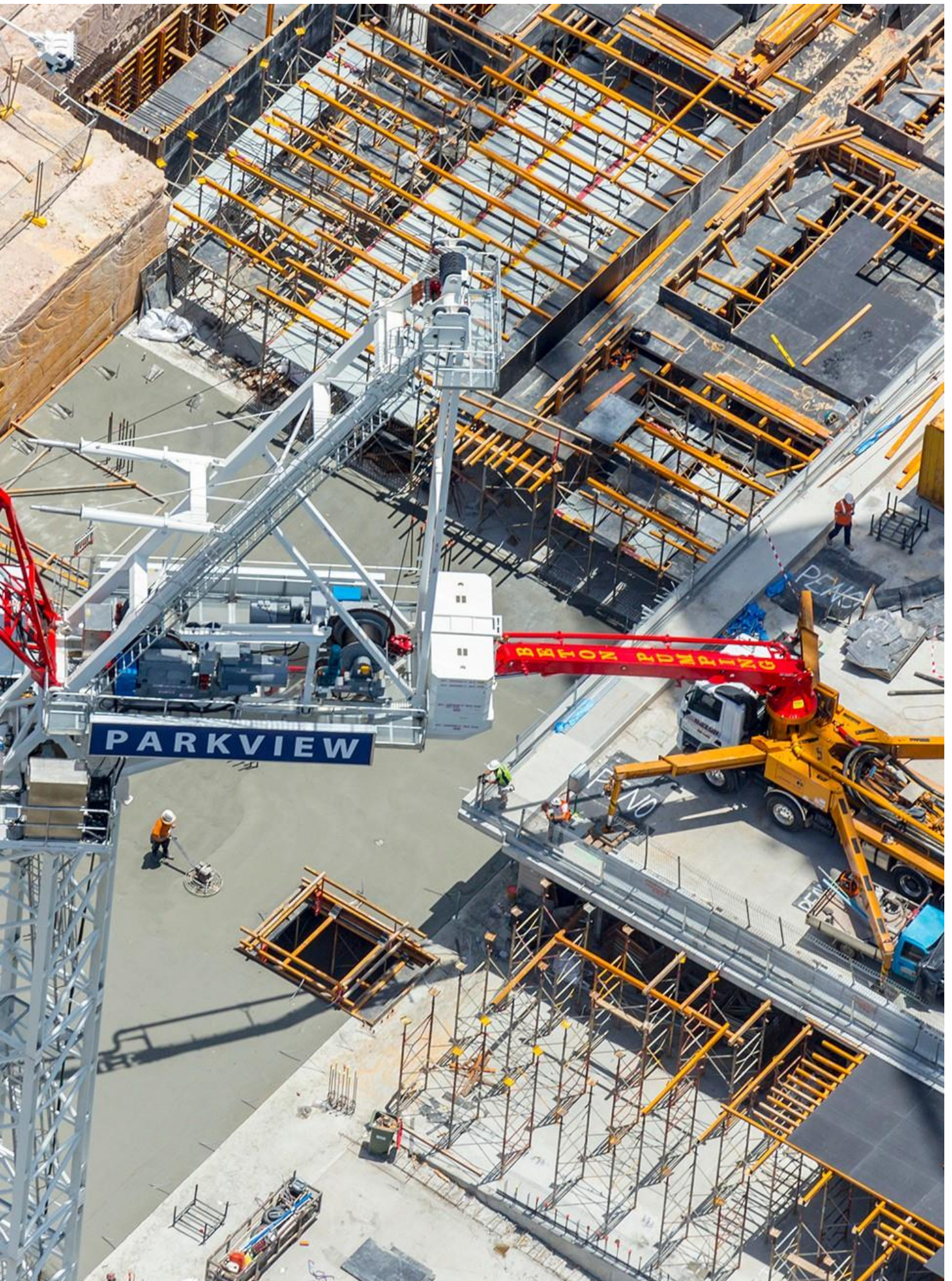
PARKVIEW CONSTRUCTIONS PTY LTD

Tony Touma

Executive Chairman

27 October 2022







PARKVIEW
CONSTRUCTIONS PTY LTD
60 UNION STREET, PYRMONT, NSW 2009