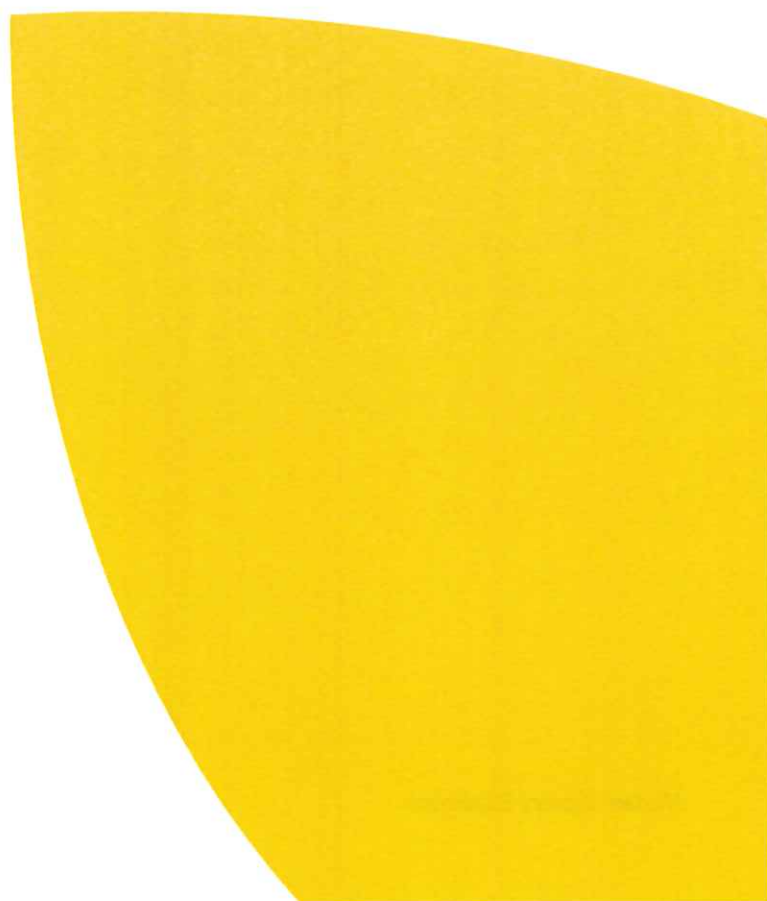
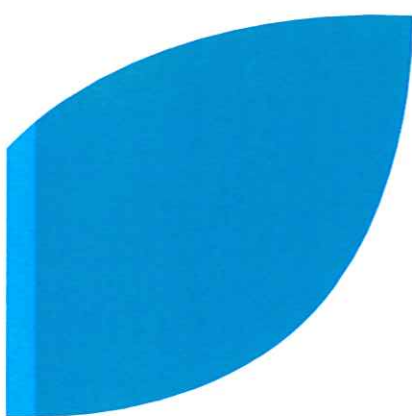




Modern Slavery Statement

The Cancer Council NSW – Financial Year 1 July 2023 to 30 June 2024



Contents

Introduction..... 3

Criteria A – Cancer Council NSW 3

Criteria B – Our structure, operations and supply chains 3

Criteria C – Risks of modern slavery practices in operations and supply chains 5

Criteria D – Actions taken to assess and address modern slavery risks 6

Criteria E – Effectiveness of actions taken to assess and address modern slavery risks 6

Criteria F – Consultation with other entities 6

Introduction

This is the first Modern Slavery Statement (Statement) made by The Cancer Council NSW (Cancer Council NSW), ABN 51 116 463 846, pursuant to the *Modern Slavery Act 2018* (Cth) (the Act).

Cancer Council NSW is a reporting entity under the Act, having passed the revenue threshold of \$100 million for the first time in the financial year 1 July 2023 to 30 June 2024 (the reporting period).

Cancer Council NSW is in the early stages of its modern slavery risk management journey, having passed the revenue threshold for mandatory reporting under the Act earlier than anticipated. Cancer Council NSW is committed to continuous improvement in this area and this first statement lays the foundation for future reporting periods.

Criteria A – Cancer Council NSW

Cancer Council NSW is a company limited by guarantee, incorporated under the *Corporations Act 2001* (Cth) on 30 September 2005 and registered as a charity under the *Australian Charities and Not-for-profits Commission Act 2012* (Cth) on 3 December 2012. Its registered office is located at 153 Dowling Street, Woolloomooloo NSW 2011. It does not own or control any other entities.

Cancer Council NSW is a member of a national federation of Cancer Councils that covers every state and territory across Australia. Cancer Council believes in a cancer free future and is the only charity in Australia that works across every cancer. While collaborating nationally on issues that impact all Australians, together with its volunteers, supporters, stakeholders, and employees, Cancer Council NSW is focused on opportunities, needs and initiatives of importance to NSW.

Cancer Council NSW's purpose is to change the path of cancer and make sure no one walks alone.

The Board of Directors is the principal governing body of Cancer Council NSW. It has responsibility for the overall governance of Cancer Council NSW and is the ultimate decision-making authority. The Board delegates day-to-day operational management, governance and decision-making to the Executive Leadership Team, while retaining its oversight role. The Audit, Risk and Information Technology Committee is the Board Committee that has oversight of Cancer Council NSW's risk and compliance obligations, including modern slavery reporting. The organisational structure by function is described in the next section.

Further information on Cancer Council NSW's organisation and governance can be found at <https://www.cancercouncil.com.au/>.

Criteria B – Our structure, operations and supply chains

About Cancer Council NSW

Cancer Council NSW is Australia's leading cancer charity, with its principal activities aimed at achieving its short and long-term objectives as follows:

- **Research:** Developing and translating evidence for the most effective ways of reducing the impact of cancer across prevention, early detection, treatment and care.
- **Prevention and early detection:** Providing cancer prevention information programs to reduce modifiable risk factors and behaviours and increase screening program participation.
- **Support:** Providing cancer information and support services to help meet the practical, emotional and information needs of people impacted by cancer, to help them navigate through their cancer experience.

- **Advocacy:** Advocating for policy and practice change in NSW to reduce cancer incidence, increase survival, improve quality of life of people impacted by cancer and improve equity in cancer outcomes.
- **Fundraising:** Raising funds to support the above activities to ensure CCNSW is a financially sustainable organisation.

Cancer Council NSW had approximately 370 employees and 740 volunteers as at 30 June 2024. In the financial year 1 July 2023 to 30 June 2024 our annual turnover was \$106.2 million.

The Cancer Council Federation

Cancer Council NSW is a member of an unincorporated national federation of Cancer Councils made up of nine equal members, including the Cancer Councils of all states and territories and Cancer Council Australia. Cancer Council Australia is funded by the member state and territory Cancer Councils and leads the federation's work with the Commonwealth Government. Two members of Cancer Council NSW's Board of Directors also sit on the Cancer Council Australia Board of Directors.

However, Cancer Council NSW is an independent organisation that is not managed, controlled or owned by Cancer Council Australia. Similarly, Cancer Council NSW does not manage, control or own Cancer Council Australia or any other member of the federation. Therefore, this is not a joint statement covering more than one reporting entity.

Unincorporated joint ventures

Cancer Council NSW has entered into two unincorporated joint ventures that are further described below. This statement covers the Cancer Council NSW contributions to these joint ventures.

- **Lillier Lodge** – A joint venture between Cancer Council NSW and the Cancer Patients Assistance Society of NSW to provide accommodation for cancer patients and their relatives in Wagga Wagga, NSW.
- **The Daffodil Centre** – A joint venture between Cancer Council NSW and the University of Sydney to establish a leading research centre on cancer control and policy. The University of Sydney's Modern Slavery Statement for the period ending 31 December 2023 can be found at https://www.sydney.edu.au/content/dam/corporate/documents/about-us/values-and-visions/modern-slavery/2023_modern_slavery_statement.pdf.

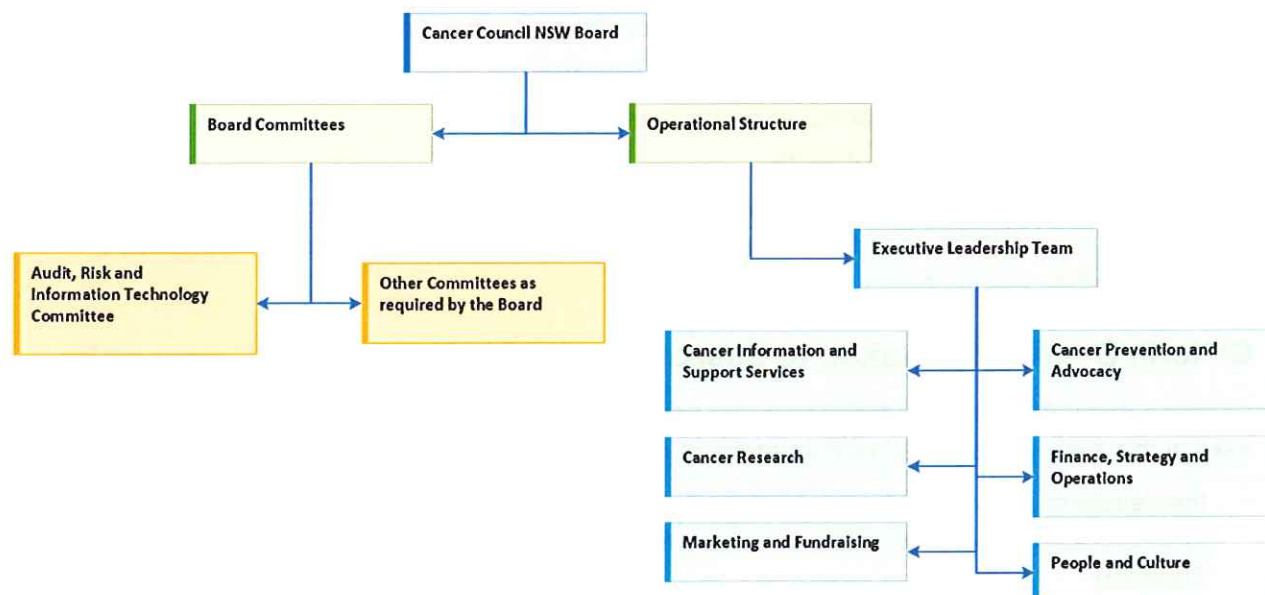
Operations

Cancer Council NSW is divided into six key operational areas:

- Cancer Information and Support Services
- Cancer Prevention and Advocacy
- Cancer Research
- Marketing and Fundraising
- Finance, Strategy and Operations, and
- People and Culture

Our Annual and Financial Reports available at <https://www.cancercouncil.com.au> provide a detailed overview of our annual activities and a summary of key statistics and results.

Organisational structure



Supply Chain

Cancer Council NSW's major areas of procurement include:

- **Marketing and Fundraising** – service providers and suppliers of promotional items
- **Information Technology** – software, cloud services and devices
- **Retail Inventory** – suppliers of sunscreen and other sun-protection products
- **General** – fleet, facilities, travel and professional services, and
- **Support Services** – service providers and providers under our financial assistance programs.

Criteria C – Risks of modern slavery practices in operations and supply chains

Cancer Council NSW is not involved in activities that carry a high risk of modern slavery such as manufacturing and agriculture. As a charity mainly focused on delivering professional activities and carrying out benevolent work in NSW, we consider the risk of modern slavery in our direct business operations to be low.

During the reporting period, more than 99% Cancer Council NSW's direct suppliers were organisations located in Australia or other countries with a low prevalence of modern slavery¹.

However, Cancer Council NSW has identified some areas of our supply chain within Australia that may present a higher risk of modern slavery², including:

¹ Low prevalence assessed as two per thousand people or less under the Global Slavery Index (<https://www.walkfree.org/global-slavery-index/>).

² Australia Country Study – Global Slavery Index (<https://www.walkfree.org/global-slavery-index/country-studies/australia/>).

- Imports of products at risk of modern slavery to Australia:
 - suppliers of retail products (including garments)
 - suppliers of promotional items for fundraising activities (including garments), and
 - suppliers of electronic devices used in our work.
- Sectors with risk of forced labour exploitation in Australia:
 - cleaning services providers.

These two key risk areas of our supply chain within Australia, any suppliers located outside of Australia and any activities conducted outside of Australia will be a focus of risk management activities in future reporting periods.

Criteria D – Actions taken to assess and address modern slavery risks

Cancer Council NSW has undertaken a number of steps to assess and address modern slavery risks at this early stage of its risk management journey, including:

- the development of a multi-year Modern Slavery Roadmap setting out appropriate processes and controls to be implemented, in conjunction with our outsourced internal audit partner, Grant Thornton
 - an initial assessment of modern slavery risk in our supply chain was conducted during the development of the Roadmap, identifying suppliers of retail products a key risk area as described in Criteria C above
 - the Roadmap includes detailed actions to improve Cancer Council NSW's maturity in supplier modern slavery risk assessment and remediation processes
- restrictions on engaging suppliers who participate in illegal or exploitative labour practices in our Purchasing Policy and purchasing training
- the inclusion of modern slavery and other human rights complaints as an example of reportable conduct in our Whistleblowing Policy, and
- highlighting modern slavery in our Risk Management Framework & Policy.

Criteria E – Effectiveness of actions taken to assess and address modern slavery risks

As noted throughout this Statement, Cancer Council NSW is developing maturity in modern slavery risk management. While our operations and supply chain carry a relatively low risk of modern slavery, Cancer Council NSW recognises that we have work to do in improving effectiveness in this area.

The development of our Modern Slavery Roadmap provides a solid foundation for Cancer Council NSW to continue on its modern slavery risk management journey and build our effectiveness in future reporting periods. As part of the implementation of this Roadmap, Cancer Council NSW will develop key performance indicators in order to better measure effectiveness of modern slavery risk management activities in future reporting periods.

Criteria F – Consultation with other entities

Cancer Council NSW does not own or control any other entities.

This statement is made in accordance with the *Modern Slavery Act 2018* (Cth) and was approved by the Cancer Council NSW Board on 27 November 2024.

A handwritten signature in black ink, appearing to read 'Michael Morgan', with a long horizontal flourish extending to the right.

Michael Morgan
Chair of the Board
Cancer Council NSW